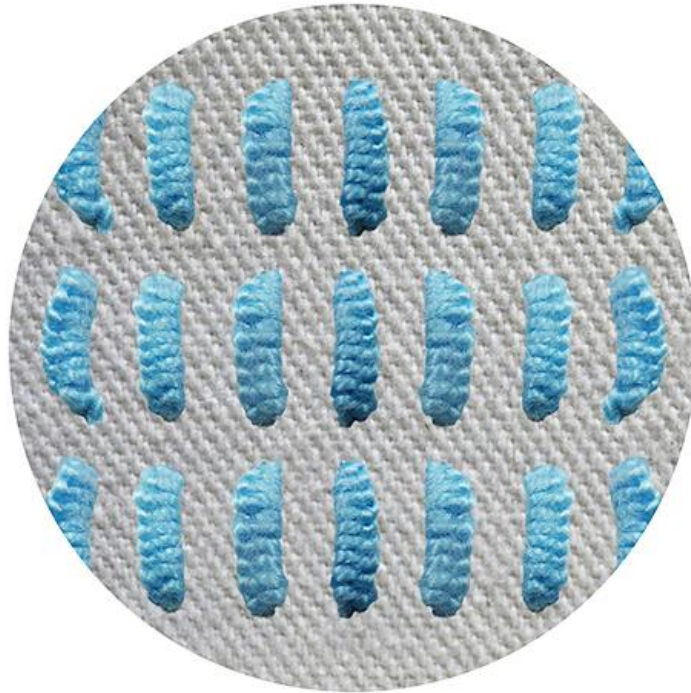




The Cast-On Buttonhole Bar



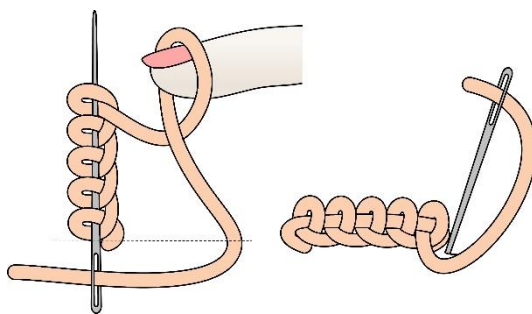
There are a few variations of this stitch in the video clip on this page. They are listed in the table below, in the order in which they appear, with the starting time for each variety in the right-hand column.

| | |
|---|----------------------------|
| <i>Basic Cast-On Buttonhole Bar</i> | <i>5 seconds</i> |
| <i>Lazy Daisy Cast-On Buttonhole Bar (single)</i> | <i>1 minute 18 seconds</i> |
| <i>Lazy Daisy Cast-On Buttonhole Bar (double)</i> | <i>1 minute 43 seconds</i> |

In the video clip on the tuition page, the small samples were worked with perle no. 5 thread. If you wish to experiment with the stitch before you work it onto your project, work with similar thread.

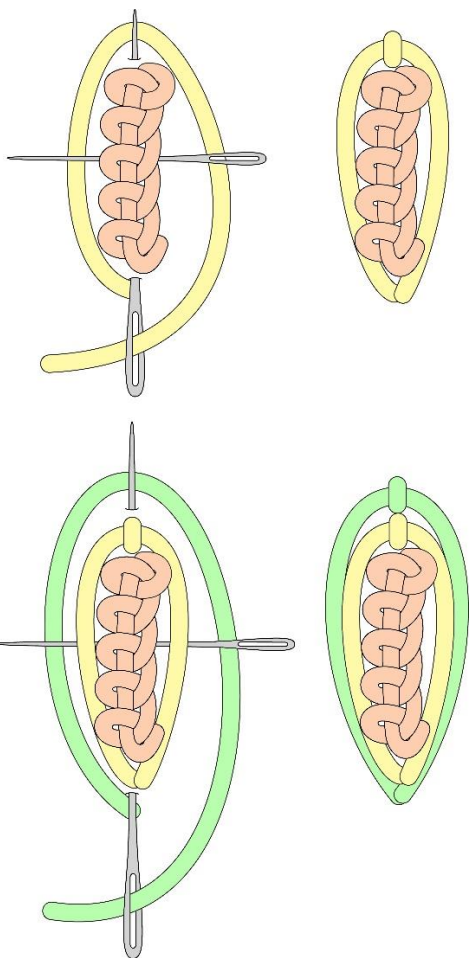
- *With a heat erasable pen, draw 2 parallel horizontal lines placing them about 5 mm apart. Work the buttonhole bars between those lines.*

Working the stitch:



- Bring the needle up at the beginning of the line.
- Take it in at the end of the line and bring it up again at the beginning of the line, making sure you don't snag the thread and leaving a loop of thread on the top.
- The needle should remain in the fabric, facing up.
- Twist the thread of the loop over your finger once and place it over needle, pull it to tighten down the needle.
- Cast on as many loops as you need to, pull the needle through, tighten the remaining thread of the original loop and go back into the fabric at the end of the line.

Add a tweak with detached chain stitches:



Lazy Daisy Cast-On Buttonhole Bar (single)

- Insert a spare needle under the buttonhole bar.
- Bring the working needle up through the fabric just below the base of the buttonhole bar. Go back into the same hole coming up just about the tip of the bullion knot.
- Guiding the thread under both sides of the spare needle and under the tip of the working needle, pull through.
- When you tighten the lazy daisy stitch try to ensure that it lies slightly underneath the buttonhole bar. This will cause it to pop out a bit, making it more pronounced.
- Finish the lazy daisy stitch with a small couching stitch that catches the loop, holding it in place.

Lazy Daisy Cast-On Buttonhole Bar (double)

- Having worked a single lazy daisy as directed above, remove the spare needle and put it back going under the single lazy daisy as well as the buttonhole bar.
- Work a second lazy daisy in the same way, started lower than, and finishing above the first.